

Quantifying the Impact of Pine Decline in the Southeastern United States

R.L. Nadel ¹, L.G. Eckhardt ¹, E.A. Carter ², M.A.S. Sayer ² and
G. Matusick ³

¹ Auburn University; ² U.S. Forest Service; ³ The Nature
Conservancy

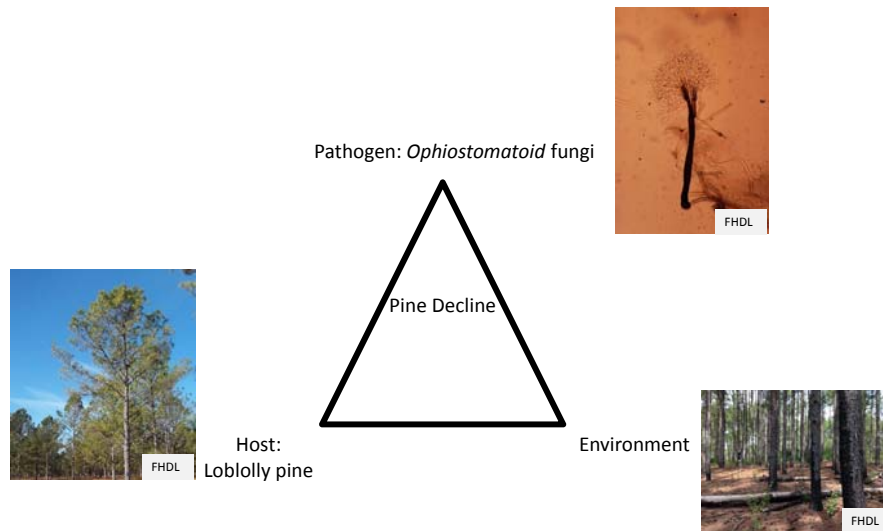
Forest Health Dynamics Laboratory

School of Forestry and Wildlife Sciences, Auburn University



Forest Health Dynamics Laboratory

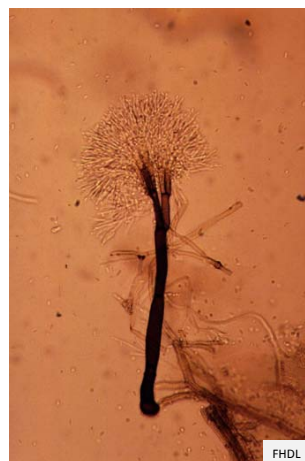
Southern Pine Decline



School of Forestry and Wildlife Sciences, Auburn University

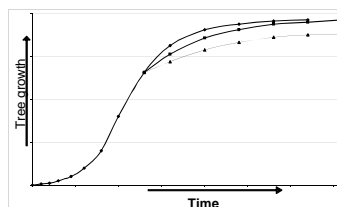
Leptographium terebrantis

- Associated with dying or declining pine trees throughout the U.S. and Canada
- Occurs on numerous pine species
- Fungus is commonly associated with root feeding bark beetles and weevils



Forest productivity

- Driven by photosynthesis to produce woody biomass
- Rate of photosynthesis depends on leaf area
- Environmental and site constraints influence leaf area production and tree growth rate
- Fine root production and replacement require a large proportion of net primary productivity



Objectives

1. Quantify the impact of fungal root infection on tree and plantation productivity and investigate the early detection potential of a subset of variables.
2. Determine the threshold level of fungal root infection required to cause growth reductions and mortality of plantation trees.
3. Examine the role of fungal root infection and its interaction with the water, nutrient, and carbon relations of plantation trees to determine the cause(s) of tree mortality and growth losses by the pine decline process.
4. Determine the impact of fungal root infection on the behavior of bark beetles and other pests within affected stands.

Experimental plan

- Site characteristics
 - Physiographic information
 - Soil description data
- A weather station installed to measure microclimate
- Experimental treatments: namely fungal inoculum loads
 - Control (no inoculum and no wound)
 - Wound (no inoculum)
 - Low inoculum load
 - Medium Inoculum load
 - High inoculum load



Objective 1: Quantify the impact of fungal root infection

- We hypothesize that tree growth and physiological measurements will be significantly different between trees impacted by pests and pathogens compared to trees that are not

Objective 1: Quantify the impact of fungal root infection

- Tree and plot growth measurements
 - Age
 - Basal area
 - Diameter at breast height (DBH)
 - Tree heights
- Physiological measurement
 - Leaf area index (LAI) taken seasonally



Objective 2: Determine the threshold level of fungal root infection required to cause growth reduction

- We hypothesize varying pathogen levels among treated trees will result in significantly different losses in growth and stand productivity
- Inoculation methods



School of Forestry and Wildlife Sciences, Auburn University

Objective 3: Fungal root infection and its interaction with water, nutrient and carbon relations

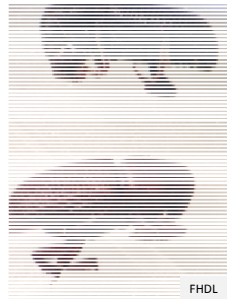
- We hypothesize that a loss in tree vigor and stand production by pine decline is triggered by a carbon deficit
- Measurement of new growth
 - Monitored by mini-rhizotron
- Measure defense
 - Resin analyses
- Branch phenology measurements
- Soil nutrition measurements
- C_{13} discrimination analysis



School of Forestry and Wildlife Sciences, Auburn University

Objective 4: Impact of fungal root infection on behavior of bark beetles and other pests

- We hypothesize that beetle behavior surrounding and within infected trees will be significantly different between treatments



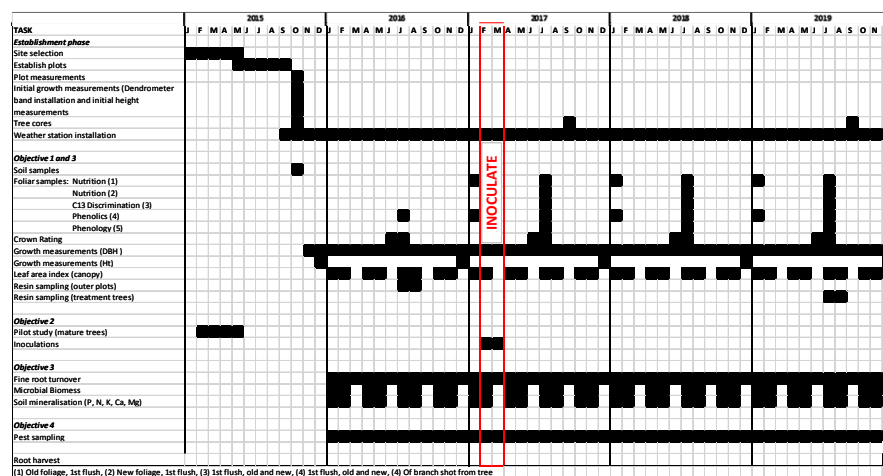
FHDL



FHDL

School of Forestry and Wildlife Sciences, Auburn University

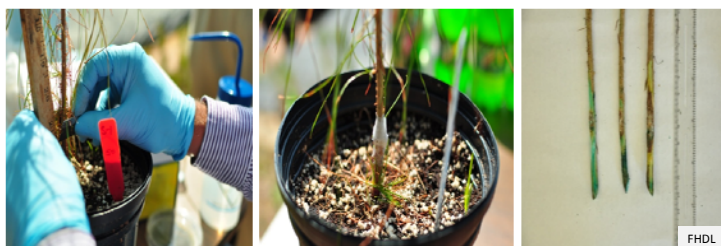
Timeline



School of Forestry and Wildlife Sciences, Auburn University

Work to date

- Establishment phase and inoculation pilot study
- Most virulent isolate determined
- Site located, plots to be installed
- Baseline data collected



Long-term goals

- Aimed at determining the actual impacts on productivity and biological cause(s) of Pine Decline so that landowners and forest managers may more precisely predict future timber revenues from affected stands and adjust management activities accordingly.
- The knowledge produced by this project will be used to develop best management practices for areas affected by decline. It will allow for the development of a correction factor, needed to account for losses (tree death as well as predicted growth losses) from pine decline in productivity models.

Acknowledgements

- Forest Health Cooperative

